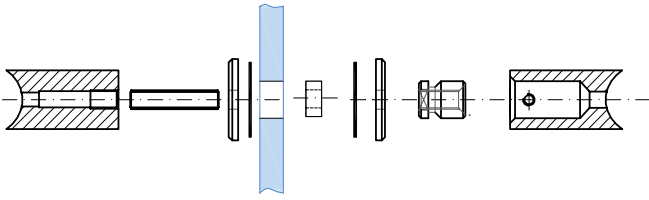


DOOR HANDLES FASTENERS

B 1

Holder with M8 thread

Holder for bushing

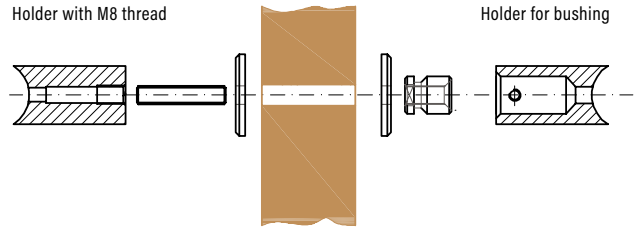


Back to back mounting on glass doors, through hole Ø16 mm

B 3

Holder with M8 thread

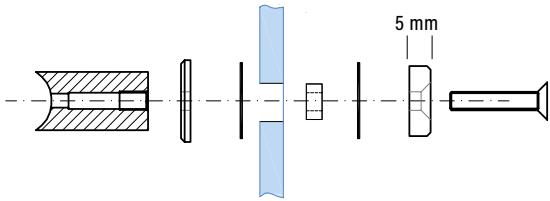
Holder for bushing



Back to back mounting on wood, fibreglass and metal doors, through hole Ø12 mm

B 5 Glass

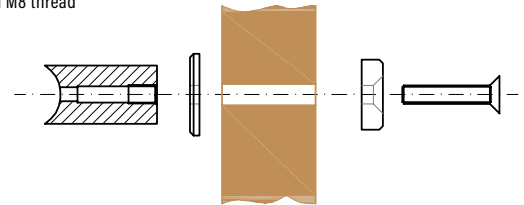
Holder with M8 thread



Bolt through mounting on glass doors, with cover plate, through hole Ø16 mm

B 5 Wood

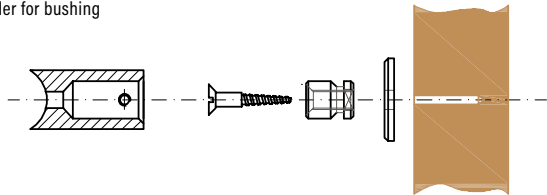
Holder with M8 thread



Bolt through mounting on wood, fibreglass and metal doors, with cover plate, through hole Ø12 mm

B 6

Holder for bushing

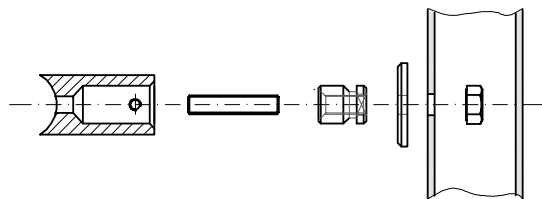


Concealed front mounting on wood doors

B 7

Holder for bushing

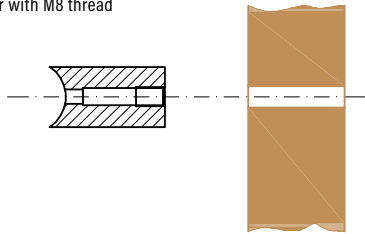
M8 thread or rivet nut



Concealed front mounting on fibreglass and metall doors

B 9

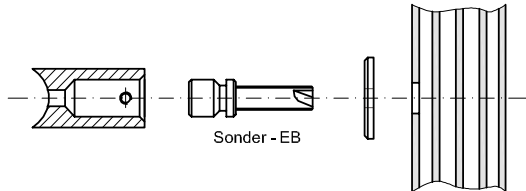
Holder with M8 thread



Bolt through mounting on wood, fibreglass and metal doors, through hole 12 mm, standard M8 bolt

B 10

Holder for bushing



Fastening with self-tapping mounting screw